

# ZS

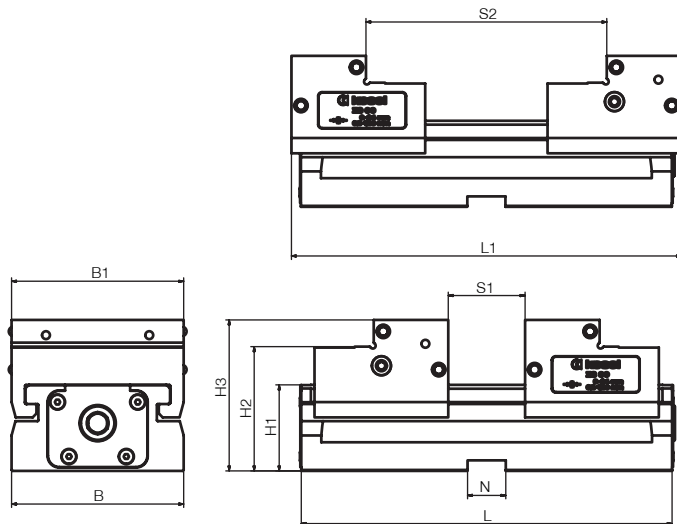
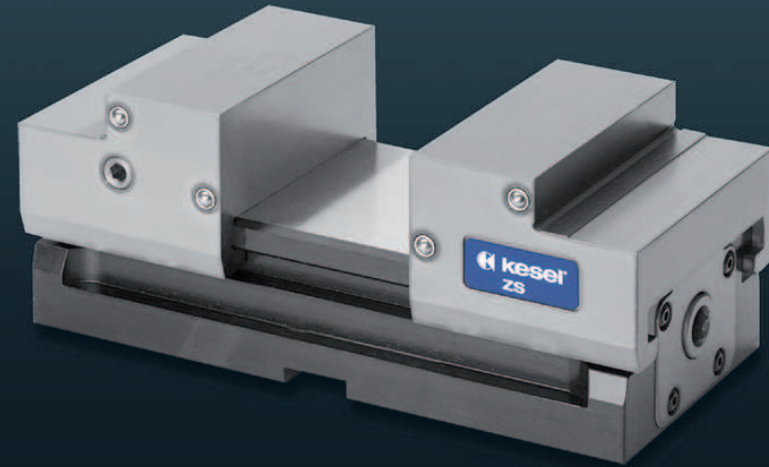
## Centering vise for 5-sided machining

Conventional with clamping claws on machine table or automation with base plate adapted according to customer wishes

- > For conventional clamping
- > Suitable for automation
- > With quick adjustment of the clamping range
- > Optimum chip protection, enclosed system
- > With jaws quick release system
- > For various jaws systems (on demand)

### Scope of delivery:

Allen operating key

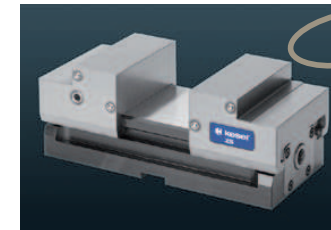


Type ZS	Order number	Length L	Length max. L1	Width B	Jaw width B1	Height H1	Height H2	Height H3	groove	Clamping range S1	S2	Clamp. stroke
45	03.25.370.0004	118	125	45	45	30	42	48	12	0 - 35	34 - 69	2x18,5
65	03.25.370.0006	144	148	65	65	38	53	63	20	0 - 44	42 - 86	2x24
90	03.25.370.0009	194	205	90	90	45	65	80	20	0 - 64	62 - 126	3x24
115	03.25.370.0010	194	205	90	115	45	65	80	20	0 - 64	62 - 126	3x24



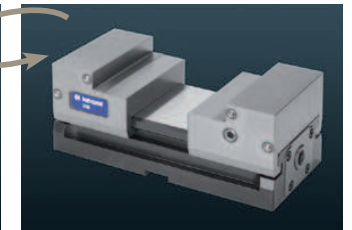
### Automation

- > Adaptation to handling systems possible through special plates

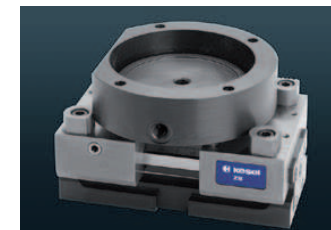


### Jaws quick release system

- > A special latching mechanism allows quick adjustment of the clamping range, as well as a quick jaws change.
- > Quick change from standard jaw to special jaw possible (see accessories)



Type ZS	max. clamping force	Weight kg
45	10 kN at 50 Nm	2
65	15 kN at 80 Nm	4
90	25 kN at 120 Nm	8
115	25 kN at 120 Nm	9



**ZS accessories**



**Step jaw** screw-on

Type	Order no.	Width	Height
ZS 45	02.25.370.1040	45	6
ZS 45	02.25.370.1041	26	6
ZS 65 wide	02.25.370.1060	65	6
ZS 65 narrow	02.25.370.1061	36	6
ZS 90	02.25.370.1090	90	8
ZS 90	02.25.370.1091	50	8
ZS 115	02.25.370.1111	115	8
ZS 115	02.25.370.1112	60	8



**Grip - ledge**

Type	Tall face Order no.	Height	Step w x h
ZS 45	02.25.370.1043	18	2 x 3
ZS 65	02.25.370.1066	25	2 x 4,5
ZS 90	02.25.370.1092	34	2 x 4,5
ZS 115	02.25.370.1113	34	2 x 4,5

Type	Stepped face Order no.	Height	Step w x h
ZS 45	02.25.370.1044	6	10 x 3
ZS 65	02.25.370.1067	10	10 x 4,5
ZS 90	02.25.370.1093	14	2 x 2,5
ZS 115	02.25.370.1114	14	2 x 2,5



**Step ledge** Click, stepped face

Type	Order no.	Height	Thickness
ZS 45	01.25.370.1042	4	3
ZS 65	01.25.370.1068	6	3
ZS 90	01.25.370.1094	11	3
ZS 115	01.25.370.1115	11	3



**Step ledge** Click, tall face

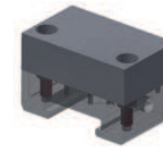
Type	Order no.	Height	Thickness
ZS 45	02.25.370.1047	15	3
ZS 65	02.25.370.1069	20	3
ZS 90	02.25.370.1095	29	3
ZS 115	02.25.370.1116	29	3

**ZS accessories**



**Multi-jaws** flexible in use for grip application and support elements

Type	Order no.	L	W	H	Clamping range max
ZS 45	03.25.370.1040	40	65	12	81
ZS 65	03.25.370.1060	50	90	15	102
ZS 90 ZS 115	03.25.370.1100	70	115	20	118



**Soft jaw** on multi-jaws. Material 90 MnCrV8

Type	Order no.	Length	Width	Height
ZS 45	02.25.370.1048	40	65	20
ZS 65	02.25.370.1071	50	90	25
ZS 90 ZS 115	02.25.370.1097	70	115	30



**Prism jaws** hardened and ground

Type	Order no.	L	W	H	Clamping ø
ZS 45	02.25.370.1050	8	45	18	ø 6 - 18
ZS 65	02.25.370.1070	9	65	25	ø 8 - 25
ZS 90 ZS 115	02.25.370.1096	14	90	18	ø 10 - 34



**Clamping claws**

Type	Order no.	for	L	W	Elongated hole
ZS 45 ZS 65	01.25.370.0052	B45 and B65	53	30	11
ZS 90 ZS 115	01.25.370.0102	B90 and B115	60	30	13